

# DX8000 Series Digital Video Recorder

## 8/16 CAMERA INPUTS, 80 GB-1 TB STORAGE, ADVANCED SEARCH CAPABILITIES

### PRODUCT FEATURES

- Up to 720 x 480 Recording Resolution
- Up to 480 Images Per Second (IPS) Recording Rate at 320 x 240 Resolution (NTSC)
- Up to 400 Images Per Second (IPS) Recording Rate at 352 x 288 Resolution (PAL)
- Up to 16 Camera Inputs and Outputs with Auto Termination
- Maximum Internal Storage Capacity of 1 TB
- Multiple Displays for Live Viewing or Playback While Recording
- Continuous, Motion Detection, Alarm, and Scheduled Recording
- Ability to Connect Multiple DX8000s Together
- Ability to Support Five Simultaneous Clients
- Network Bandwidth Throttling
- Digital Zoom on Playback
- Pre-Motion and Pre-Alarm Recording
- On-Screen PTZ Control with Positioning Device Programming Capability
- Up to 16 Channels of Audio Recording (Optional)
- Includes Remote PC, Web, and Handheld Client Software
- Proprietary Compression Technology Offering High-Quality and Small File Sizes



(MONITOR IS NOT SUPPLIED)

- Security and Lockdown Protection Based on NIST and Microsoft® Standards
- Built-in support for Pelco P, D, and Coaxitron® PTZ protocols
- Expandable RAID Storage with the Use of the DX9200HDDI Video Storage Unit

The **DX8000 Series** Digital Video Recorder (DVR) represents the next generation of high-performance, PC-based digital video recorders. It is designed for those users who demand an easy-to-operate, yet innovative DVR. The **DX8000** features built-in video motion detection, alarm-based recording, and relay output controls. Models range from an eight-channel, single 80 GB HDD unit to a sixteen-channel unit with up to 1 TB of storage.

Fully implemented networking capabilities allow remote administration, playback, and export using the included PC client application. Live viewing is supported on a variety of client platforms, including Internet browsers and Pocket PC-compatible handheld devices.

Versatile high-speed search operations include time and date, event list, thumbnail, and intelligent pixel searching. Extensive scheduling features allow customizing of weekday, weekend, and special event recording.

The **DX8000** offers users a highly intuitive and ergonomically designed interface that provides simple and efficient access to all setup and operations functions. Manual backup can be performed using a number of optical, magnetic, and mapped network drive options.

Overall, the **DX8000** combines a feature-rich security platform with a flexible and intuitive user interface offering an unprecedented level of functionality.



DataFAX  
SPEC: 2623  
MANUAL: Not Available through DataFAX

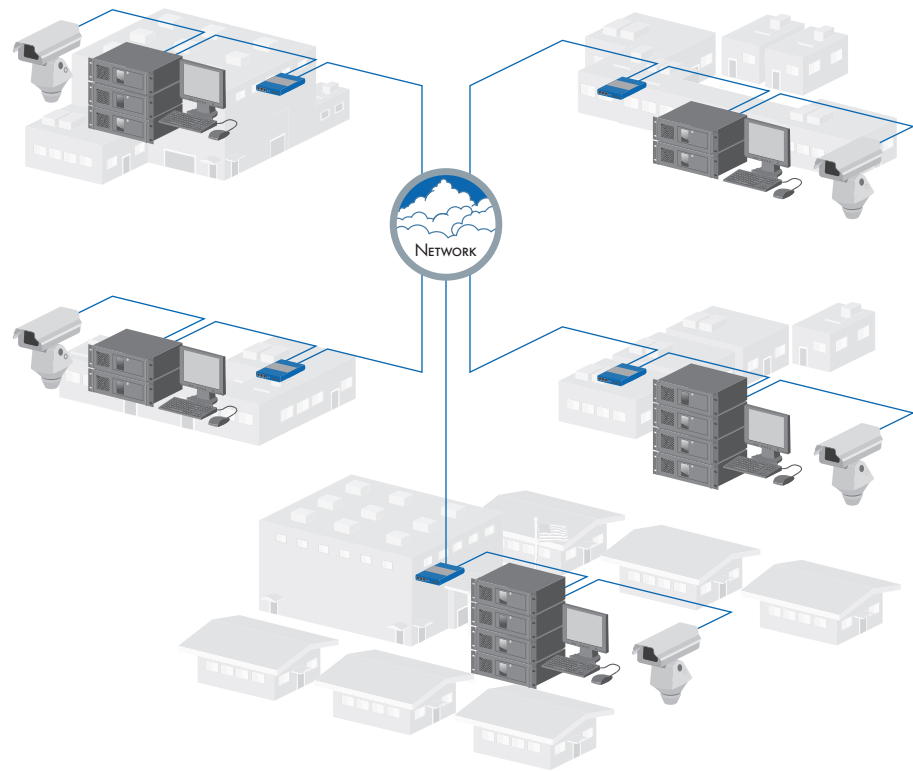
C623 / REVISED 8-04



# TECHNICAL SPECIFICATIONS

## APPLICATIONS

- Connect to multiple sites simultaneously
- Supports up to five active server-to-server connections
- View live, playback, and search video
- Display 1, 4, 9, or 16 cameras simultaneously
- Control and configure sites remotely



## ADDITIONAL FEATURES

- Local and Remote Administration
- Local and Remote Live, Search, and Playback Viewing
- Individual Camera Channel Configuration
- Display of Cameras from Different Sites on One Screen
- Dynamically Adjustable Frame Rate and Image Quality for Motion and Alarm Recording
- Dynamically Adjustable Frame Rate and Image Quality for Pre-Motion and Pre-Alarm Recording
- Pre-Alarm Recording up to 60 Seconds (up to 15 Minutes with Optional 256 MB RAM Upgrade)\*
- Monitor System Changes Using Activity Logs
- User-Friendly and Highly Intuitive Graphical User Interface
- Local and Remote Software Upgrade Capabilities
- Multilevel Password and User Configuration
- Automatic Image Watermarking
- Multilanguage Support (English, German, French, Italian, Portuguese, and Spanish)
- User-Definable PTZ Presets, Patterns, and Preset Tours
- Display up to 16 Local and Remote Cameras on a Single Screen
- Print Still Images from Video
- Export Video and Still Images in Multiple Formats, Including DX8000 Native, AVI, ASF, BMP, TIFF, and JPEG
- API Facilitates Development and Integration of Third-Party Applications
- Ability to Configure Any Number of Camera Channels for Covert Mode

## SECURITY

The DX8000 incorporates a number of vigorous security measures, recognized by the National Institute of Standards and Technology (NIST) and Microsoft®, to ensure system integrity and to safeguard data.

## AUDIO RECORDING

The DX8000 supports audio recording capabilities with the installation of the DX8000-AUD audio expansion option. The DX8000 accepts up to 16 individual monaural audio inputs. Each input is designed to receive an unbalanced, line-level audio signal with voltages between -1 V and +1 V into an impedance of 1 k $\Omega$  or more.

\* Pre-alarm time estimate based on a single channel recording at a resolution of 320x240 (CIF) and a frame rate of one image per second.

# TECHNICAL SPECIFICATIONS

## TECHNICAL SPECIFICATIONS

### Electrical/Video

Input Voltage	100-240 VAC, 50/60 Hz, auto-ranging**	
Power Consumption	Maximum 350 watts	
Signal System	NTSC/PAL	
Operating System	Windows® 2000 and Service Pack 4	
Recording Resolutions	NTSC	PAL
	320 x 240	352 x 288
	640 x 240	704 x 288
	640 x 480	704 x 576
	720 x 240	720 x 288
	720 x 480	720 x 576
Compression	Pelco proprietary	
Video Inputs	8/16 (looping with automatic termination)	
VGA Outputs	1	
Analog		
Video Outputs (Optional)	2	
Alarm Input Terminals	8/16 (user selectable, N.O./N.C.)	
Relay Output Terminals	8/16 (user selectable, N.O./N.C.)	
Remote Administration	Full remote control via TCP/IP network	
Total Recording Rate	Up to 480 images per second	

### Mechanical

Connectors	
BNC	Video inputs and outputs
6-pin mini-DIN	PS/2 mouse and keyboard
DB9	COM 1 and COM 2 (disabled)
DB15	Monitor port (SVGA) and audio input(s)
RJ-45	Ethernet port (100 BaseT) and RS-485/RS-422 ports
S-Video (from VGA card)	Analog monitor output (disabled)
USB	Six high-speed USB 2.0 ports (2 front, 4 rear)
Miniature	
Male Phone Plug	Audio Output

### General

Environmental	
Operating Temperature	50° to 95°F (10° to 35°C)
Relative Humidity	Maximum 80%, non-condensing
Dimensions	
Desktop	7.0 (H) x 17 (W) x 19.9 (D) inches (17.78 x 43.18 x 50.55 cm)
Rack Mount	7.0 (H) x 19.0 (W) x 22 (D) inches (4 RUs) (17.78 x 48.26 x 55.88 cm)
Unit Weight (Approximate)	Unit Shipping
DX8008-080	39.1 lb (17.8 kg) 60 lb (27 kg)
DX8008-250	39.1 lb (17.8 kg) 60 lb (27 kg)
DX8008-500	40.5 lb (18.4 kg) 61 lb (28 kg)
DX8008-750	41.9 lb (19.0 kg) 63 lb (29 kg)
DX8008-1000	43.2 lb (19.6 kg) 64 lb (29 kg)
DX8016-080	39.7 lb (18.0 kg) 61 lb (28 kg)
DX8016-250	39.7 lb (18.0 kg) 61 lb (28 kg)
DX8016-500	41.1 lb (18.6 kg) 62 lb (28 kg)
DX8016-750	42.5 lb (19.3 kg) 64 lb (29 kg)
DX8016-1000	43.8 lb (19.9 kg) 65 lb (29 kg)

## CERTIFICATIONS

- CE
- UL Listed
- UL Listed to Canadian Safety Standards
- FCC, Class B (Class A if audio option is installed)

At the time of this printing, other certifications are pending. Please consult the factory, our website ([www.pelco.com](http://www.pelco.com)), or the most recent B.O.S.S.® update for the current status of certifications.

## REMOTE PC CLIENT APPLICATION

### Recommended PC Requirements

Processor	Intel® Pentium® III, Pentium 4 with 800 MHz minimum processor speed
Memory	128 MB RAM
Video	AGP VGA card with minimum 64 MB video RAM (nonshared memory), 1024 x 768 display resolution, and DirectX® 8.1 application programming interface.
Monitor	SVGA or XGA with 1024 x 768 resolution
Operating system	Windows 2000 (SP4) or Windows XP Professional DirectX 8.1 or better Microsoft Internet Explorer 5.5 or later 500 MB free disk space
Mobile PDA Client Application	A Pocket PC with Microsoft PPC 2002 or higher, Intel XScale® CPU with minimum 400 MHz processor speed, and minimum 64 MB of memory

\*\* It is recommended that an Uninterruptible Power Supply (UPS) device be used with the DX8000 with a 700 VA or better rating.

# TECHNICAL SPECIFICATIONS

## MODELS

Model Number	No. of Camera Inputs	Total HDD Space (GB)	Optical Drive
DX8008-080	8	80	CD-RW
DX8008-250	8	250	CD-RW
DX8008-500	8	500	CD-RW
DX8008-750	8	750	CD-RW
DX8008-1000	8	1000	CD-RW
DX8016-080	16	80	CD-RW
DX8016-250	16	250	CD-RW
DX8016-500	16	500	CD-RW
DX8016-750	16	750	CD-RW
DX8016-1000	16	1000	CD-RW
DX8008-080DVD	8	80	DVD-RW
DX8008-250DVD	8	250	DVD-RW
DX8008-500DVD	8	500	DVD-RW
DX8008-750DVD	8	750	DVD-RW
DX8008-1000DVD	8	1000	DVD-RW
DX8016-080DVD	16	80	DVD-RW
DX8016-250DVD	16	250	DVD-RW
DX8016-500DVD	16	500	DVD-RW
DX8016-750DVD	16	750	DVD-RW
DX8016-1000DVD	16	1000	DVD-RW

### Supplied Accessories

Power cords (USA and European), keyboard, PS/2 mouse, DX8000 recovery CD, remote client application CD, audio input breakout cables (optional), alarm and relay terminal blocks, and rack mounting kit. (Monitor is not supplied with DX8000 Series DVR.)

### Optional Accessories

DX8000-ISCI	DX8000 Internal Ultra 160 SCSI card
DX8000-MUX8	DX8000 8-channel multiplexed analog output display card
DX8000-MUX16	DX8000 16-channel multiplexed analog output display card
DX8000-AUD	DX8000 8-channel audio input card
DX8000-256 RAM	DX8000 Memory upgrade from 256 MB to 512 MB
DX9200-HDDI	External RAID Storage Expansion Unit



#### Pelco Worldwide Headquarters:

3500 Pelco Way, Clovis, California 93612-5699 USA

**USA & Canada** Tel: (800) 289-9100 • FAX (800) 289-9150 • DataFAX (800) 289-9108

**International** Tel: (559) 292-1981 • FAX (559) 348-1120 • DataFAX (559) 292-0435

[www.pelco.com](http://www.pelco.com)

Coaxitron and B.O.S.S.® are registered trademarks of Pelco.  
 Microsoft®, Windows®, and DirectX® are registered trademarks of Microsoft Corporation.  
 Intel XScale,® and Pentium® are registered trademarks of Intel Corporation.  
 Specifications subject to change without notice.  
 ©Copyright 2004, Pelco. All rights reserved.